

Trilateral Perspectives

A Buyers Guide To Procurement Opportunities

March 5, 2018 • Published by Trilateral, Inc.

Dollar/Euro

The Cash U.S. Dollar Index also has options over the near term. The decline from January 2017 is a clear five waves, which means that when wave **5** is complete, prices will mount the largest advance of the past 13 months. Friday's decline, however, is steeper than we anticipated and we are not certain of the next near-term move.

Friday's rise in the Cash Euro negates the forecast that wave (iii) down was underway. The upward push is too larger and creates options for the wave structure. Near-term resistance is between 1.2346 and 1.2370, but without a clear odds-on-favorites short term pattern, we are not certain if the euro will be contained by this range. A decline below 1.2155 (March 1st) would indicate that another wave to the downside was unfolding.



CRB Commodity Index

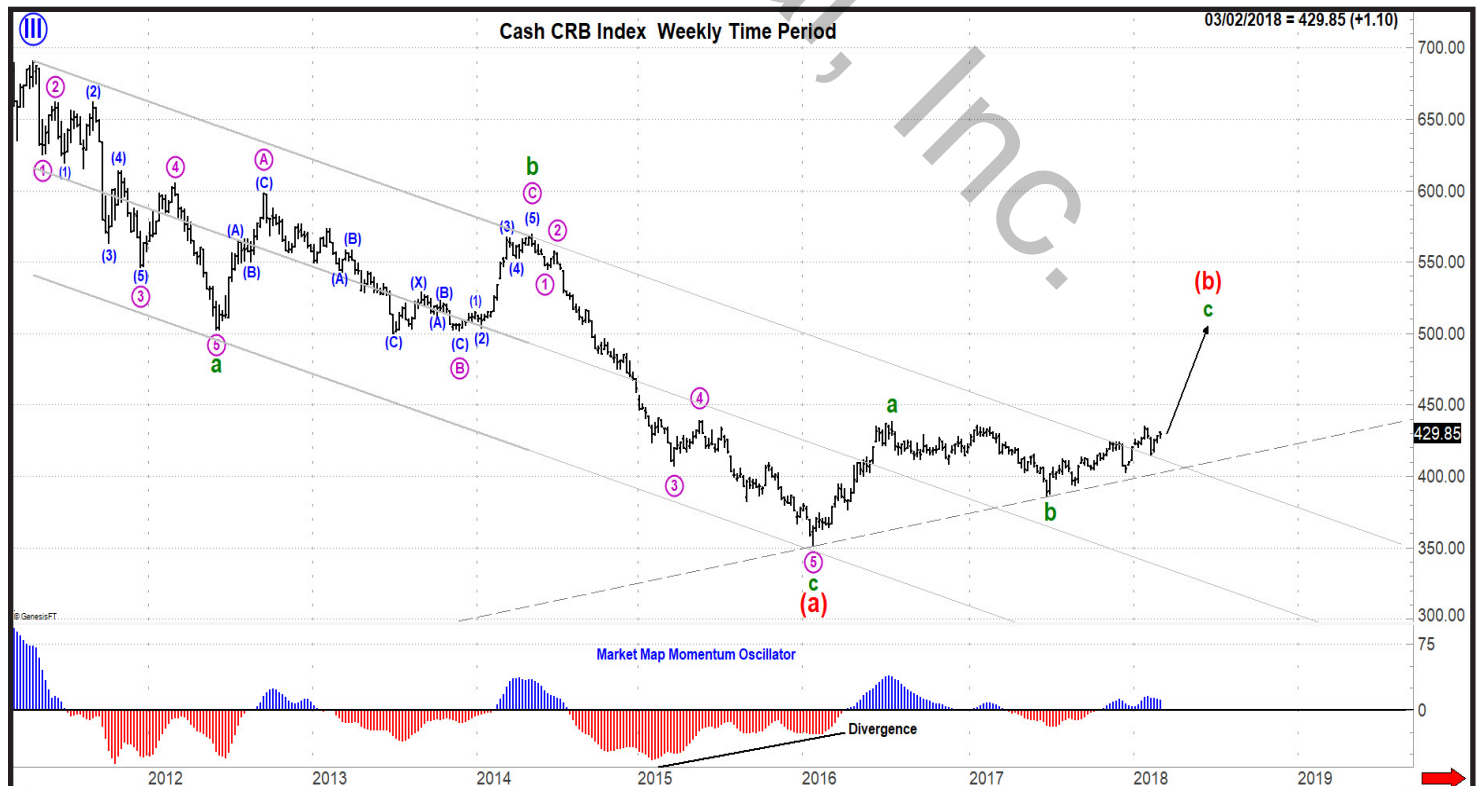
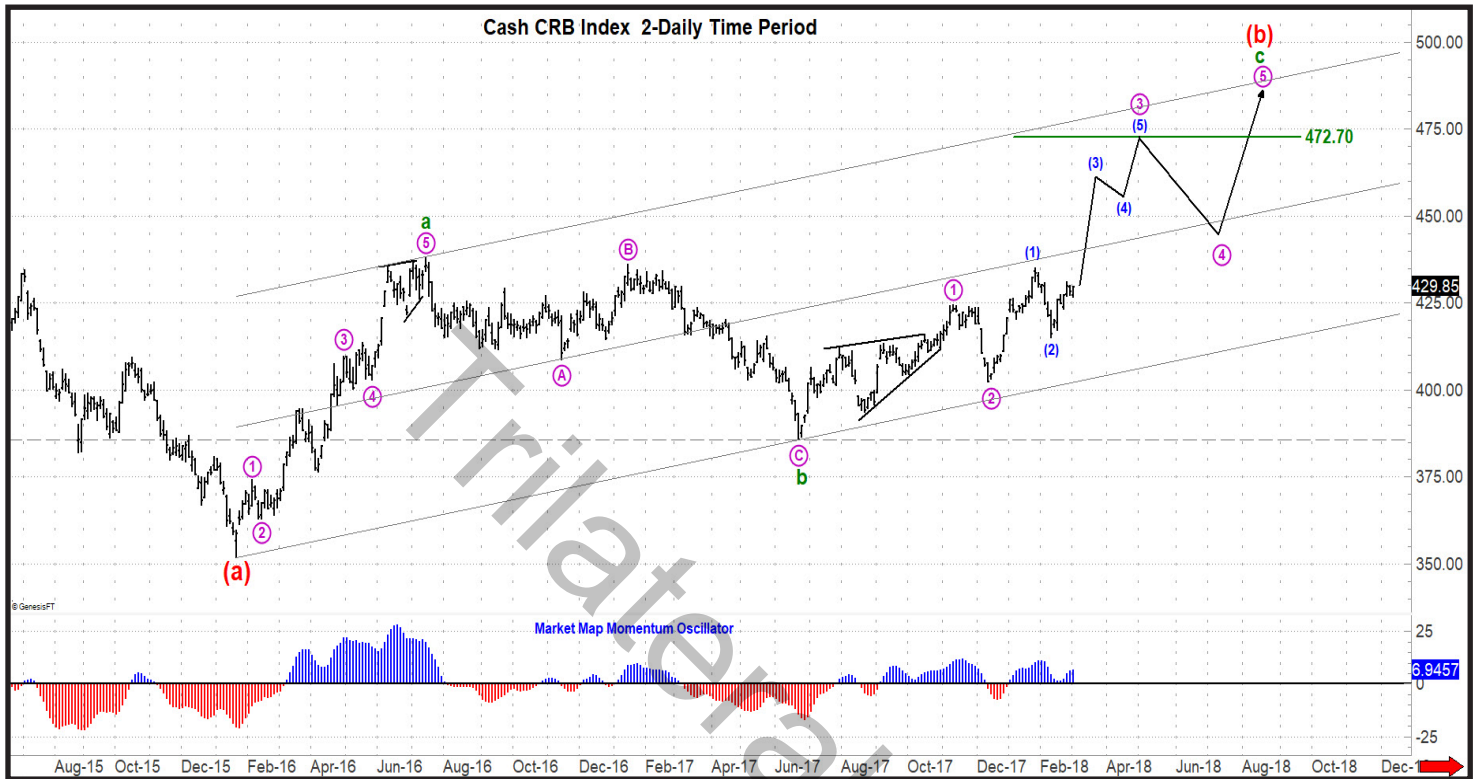
Cash CRB Index (Close: 429.85)

Support: 423.35, 417.25, 415.00, 407.65, 402.30.

Resistance: 431.10, 435.10, 436.15, 438.20.

Trend: Short-term: Up.

Long-term: Up.



Crude Oil

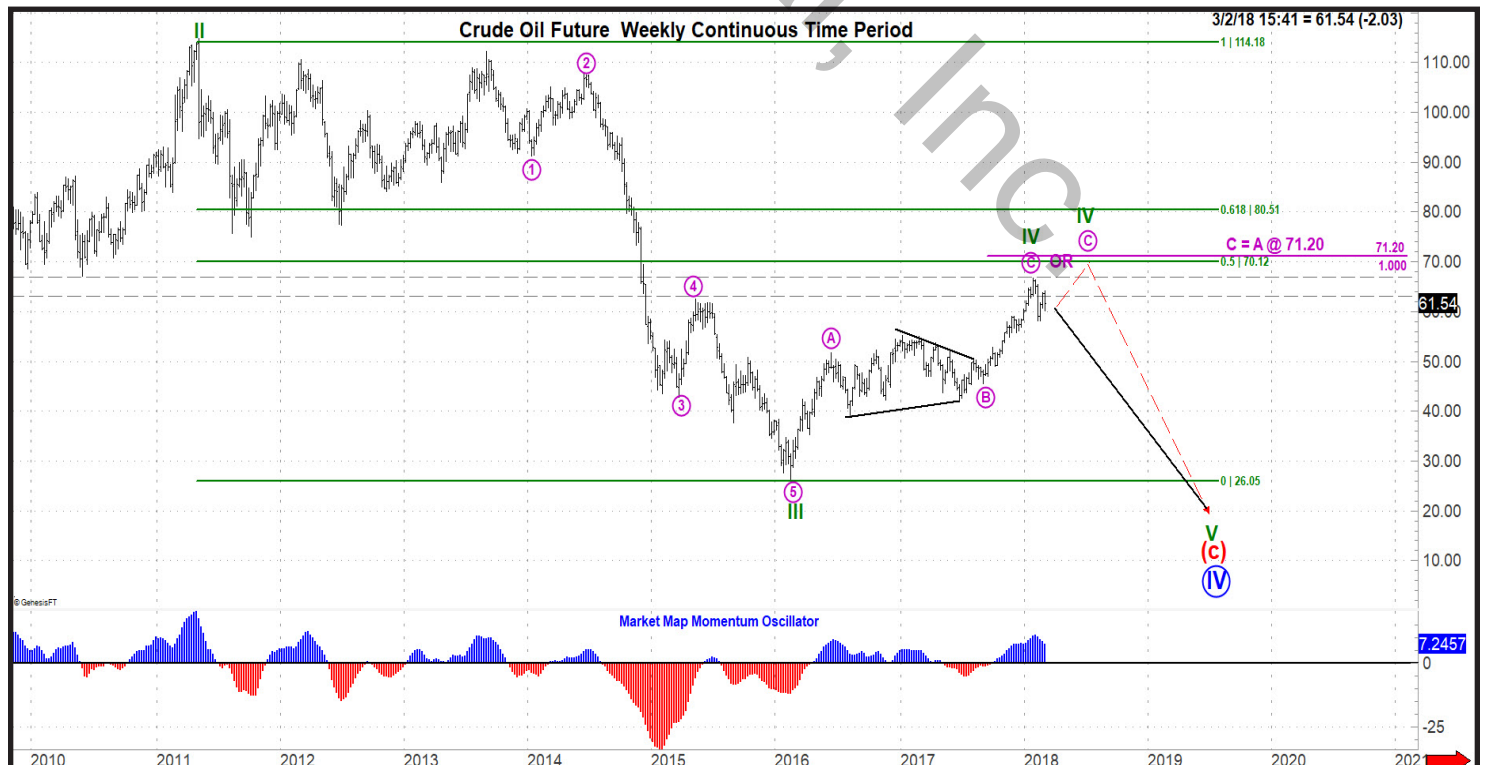
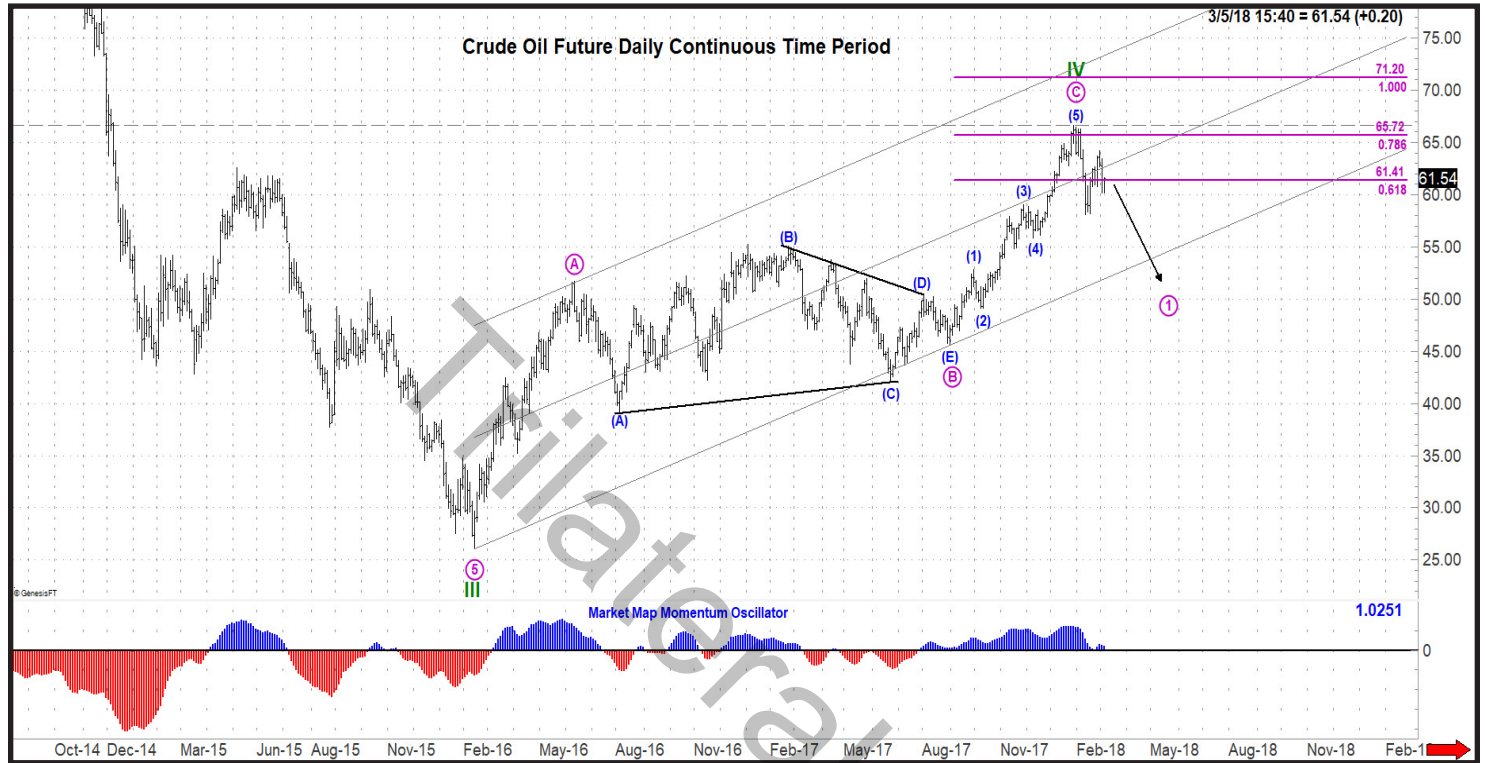
April Crude Oil Future (Close: 61.15)

Support: 60.13, 59.59, 58.09, 57.90, 55.96, 55.37, 54.23.

Trend: Short-term: Down.

Resistance: 64.24, 66.00, 66.39.

Long-term: Up.



Soybeans

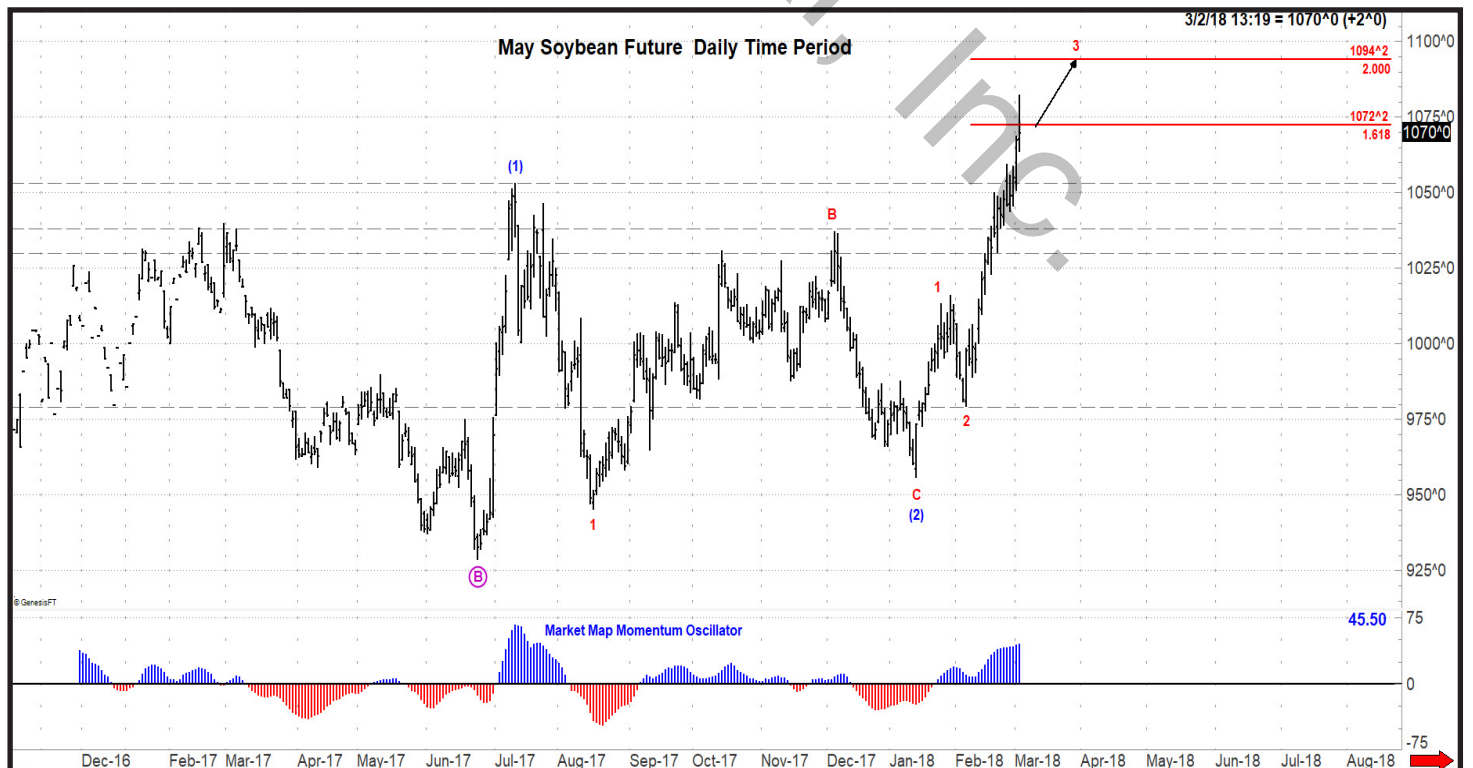
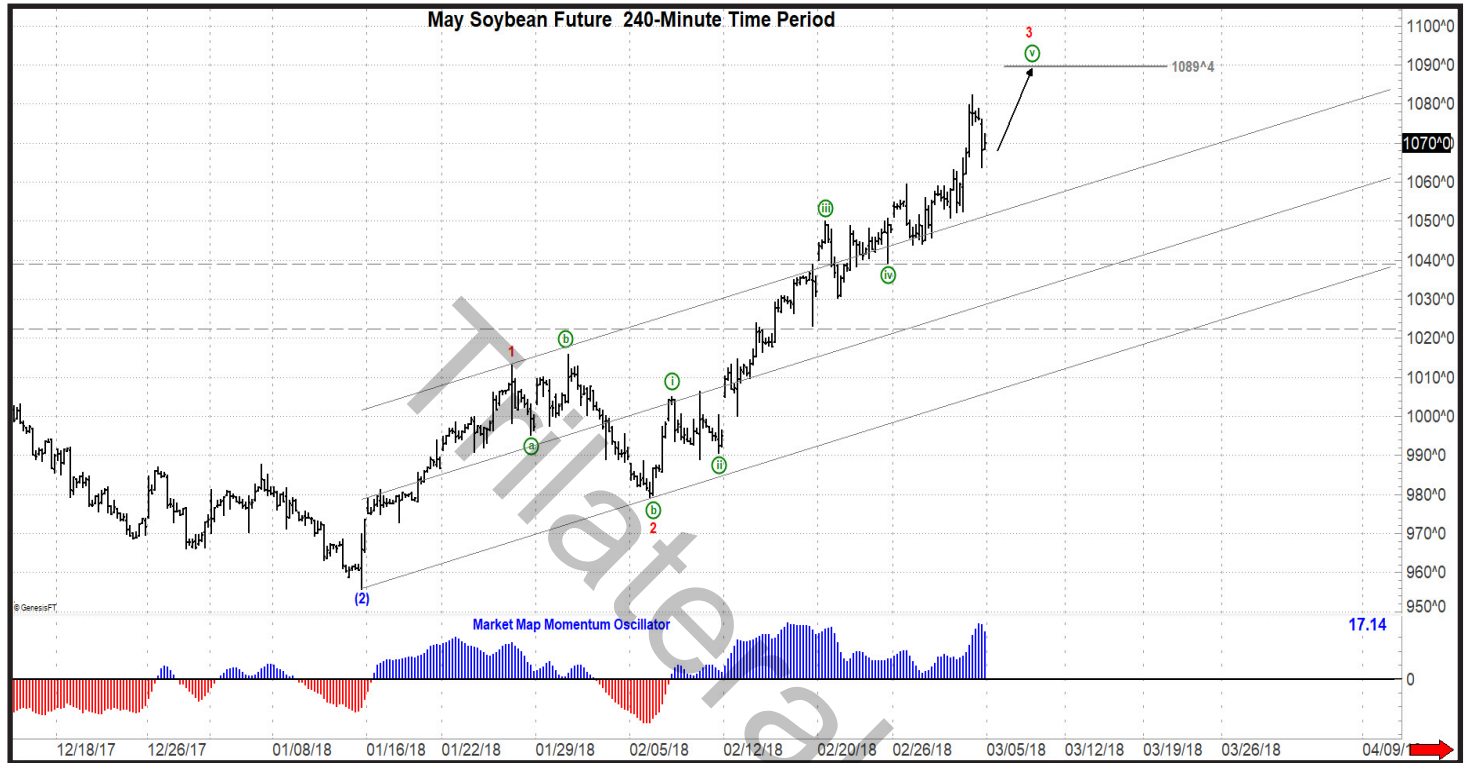
May Soybean Future (Close: 10.71)

Support: 10.30 1/4, 10.23, 9.89, 9.79 1/4, 9.72 3/4.

Resistance: 10.82 1/2, 11.81 1/2, 12.08 1/2.

Trend: Short-term: Up.

Long-term: Up.



Soybean Meal

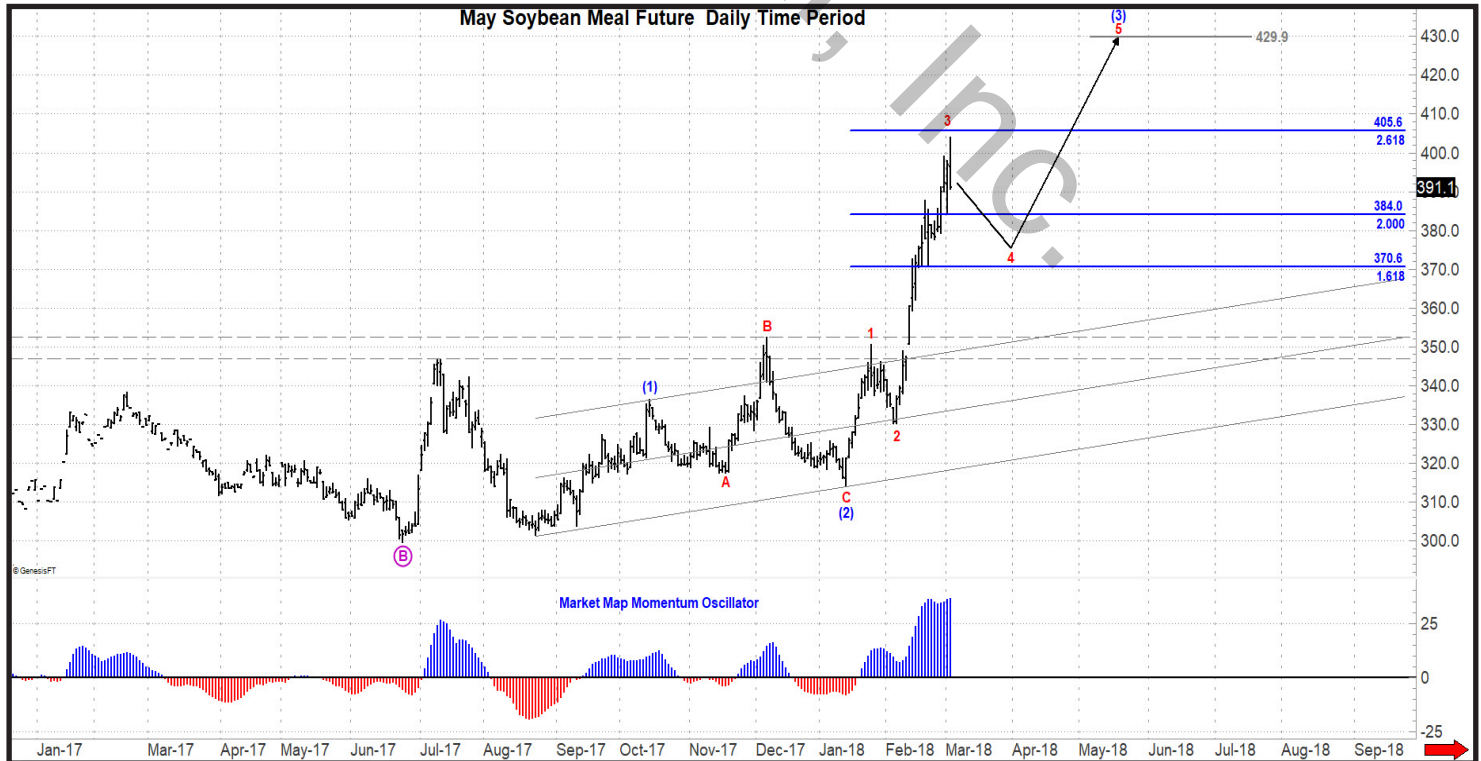
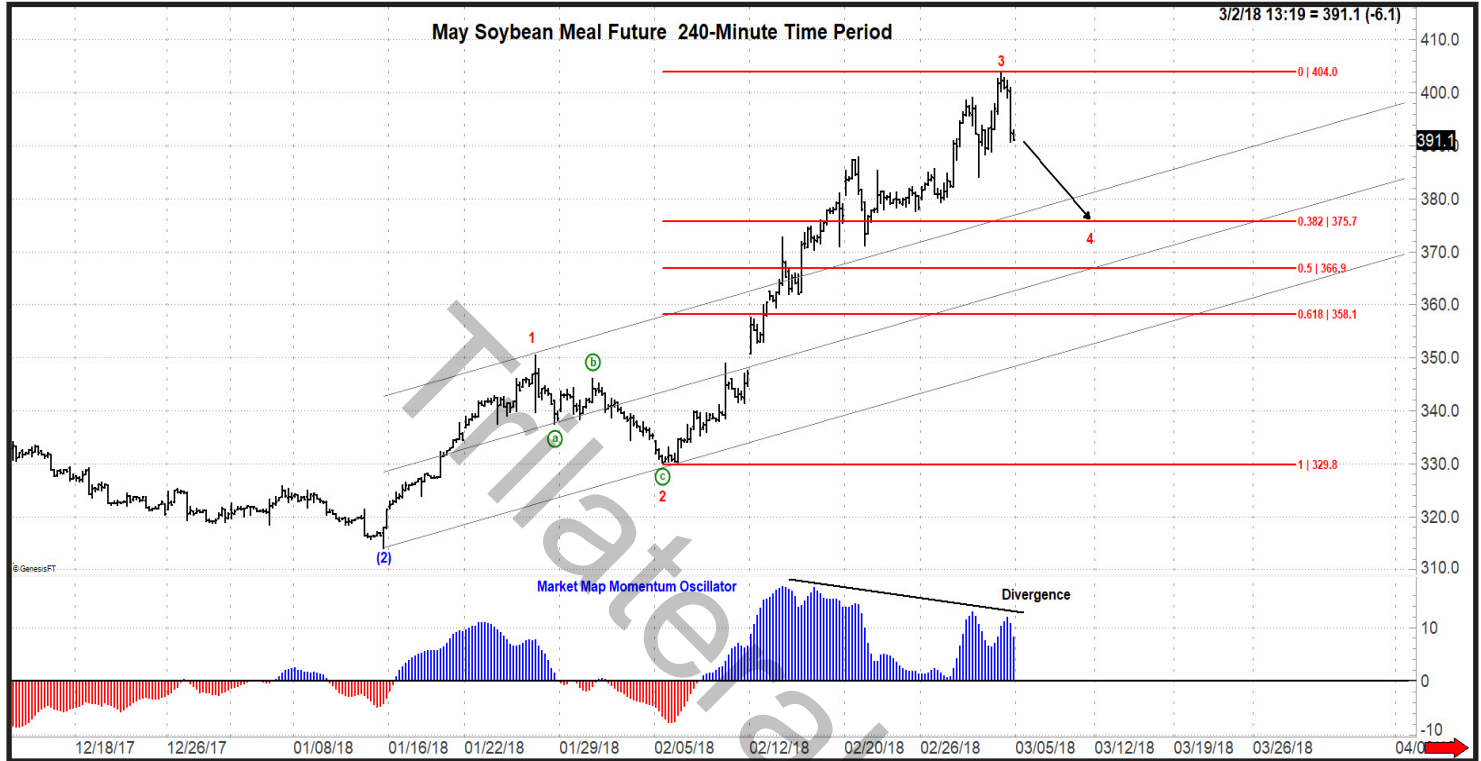
May Soybean Meal Future (Close: 391.10)

Support: 384.10, 370.30, 362.00, 350.70, 341.30, 337.90.

Trend: Short-term: Up.

Resistance: 399.20, 411.50, 432.50.

Long-term: Up.



Soybean Oil

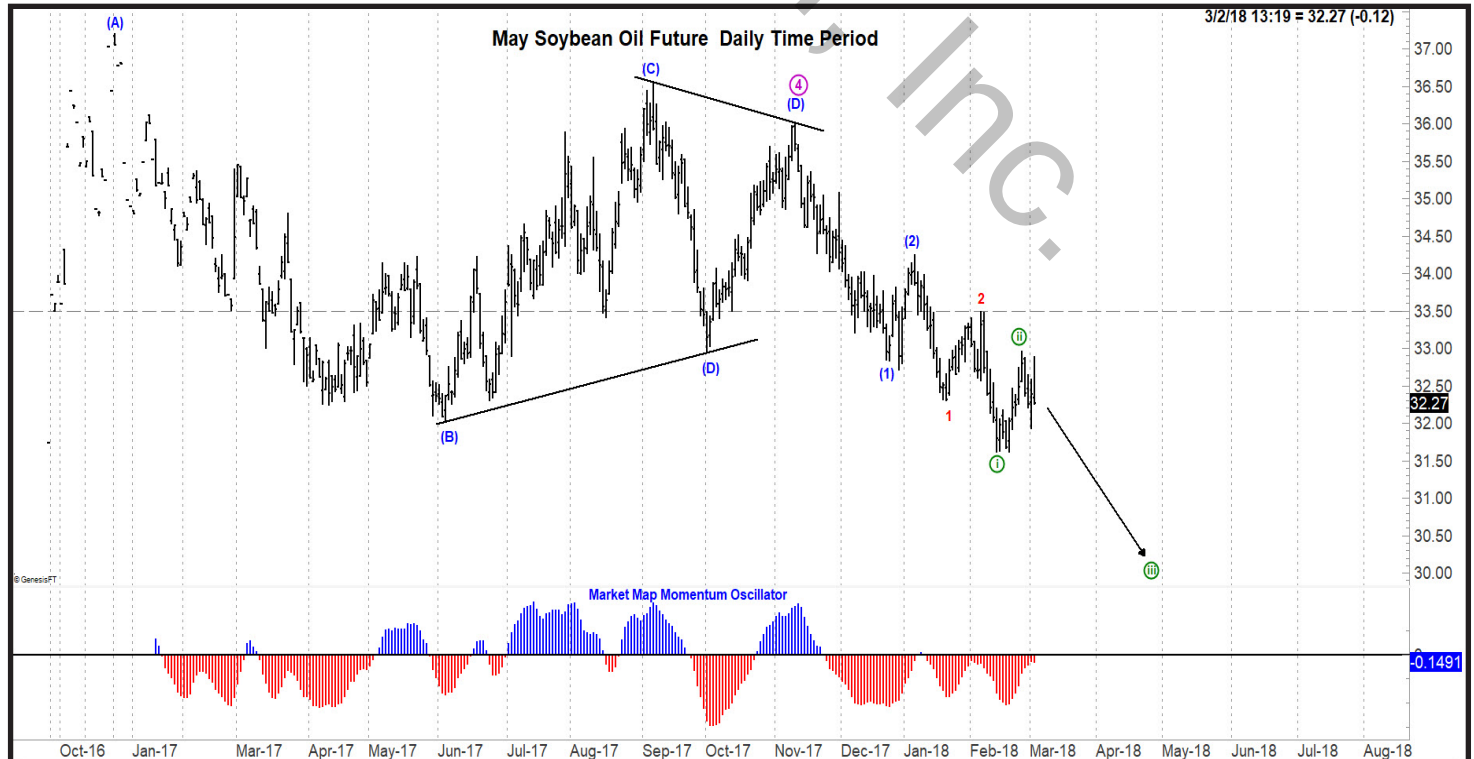
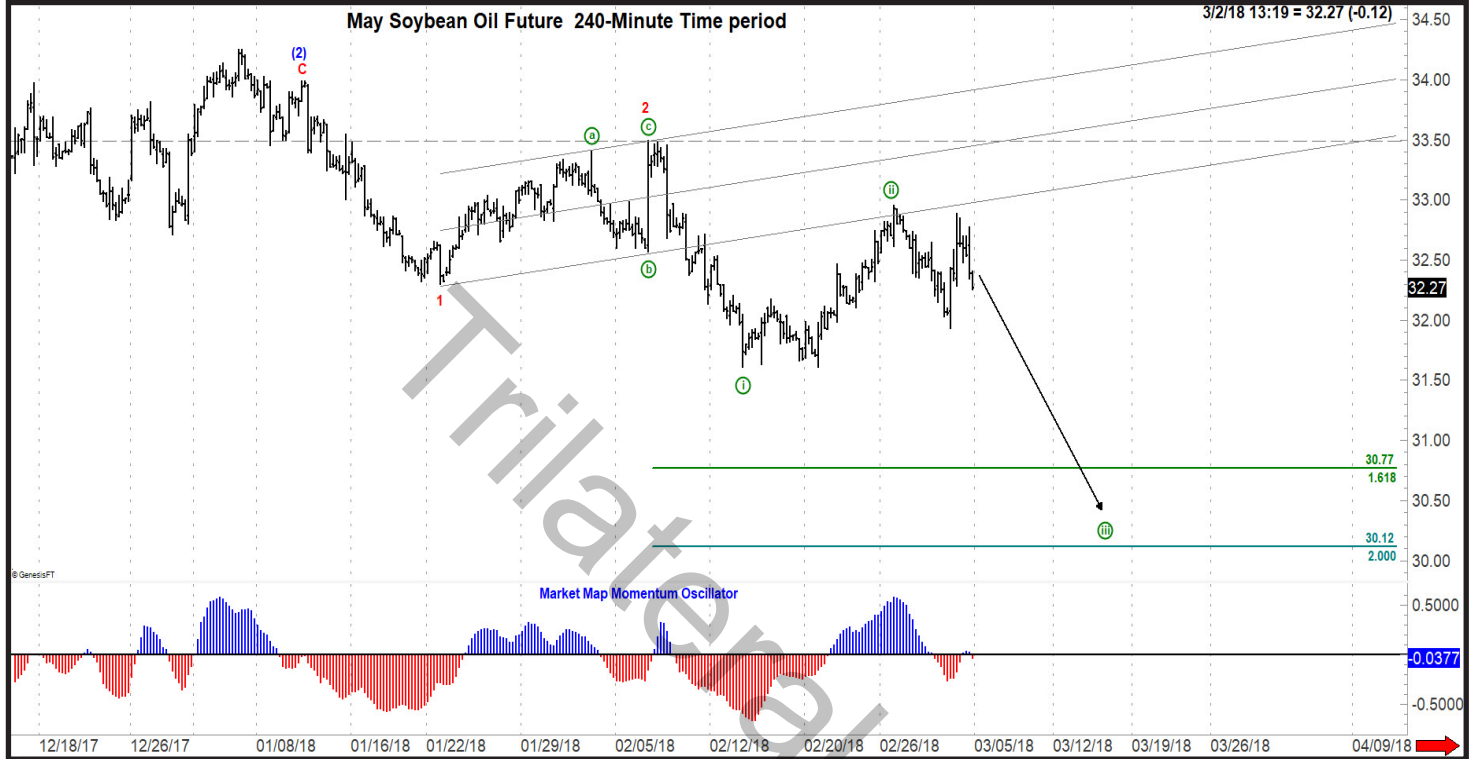
May Soybean Oil Future (Close: 32.27)

Support: 31.93, 31.61, 31.37, 30.67.

Trend: Short-term: Down.

Resistance: 32.96, 33.50, 33.99, 34.25, 35.06, 35.36.

Long-term: Down.



Corn

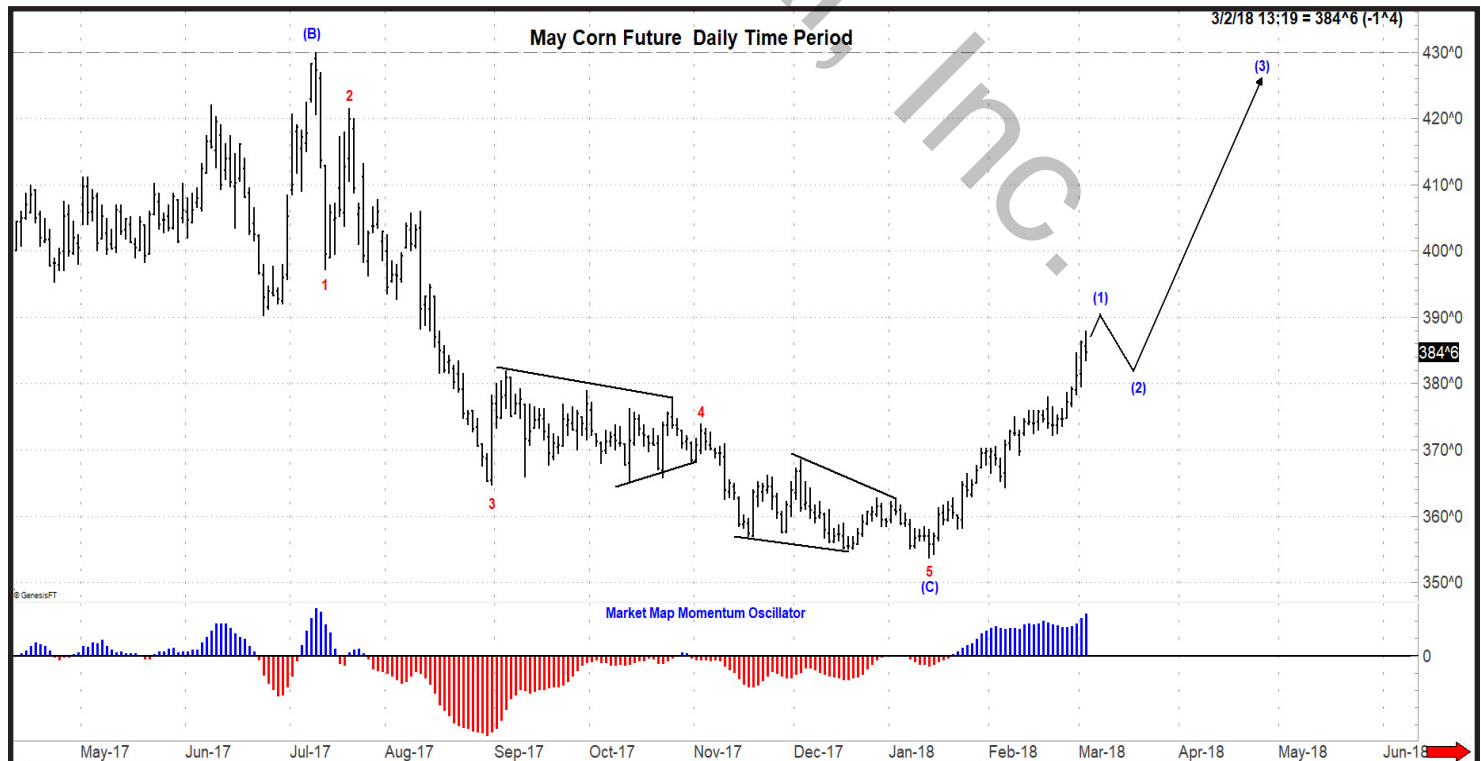
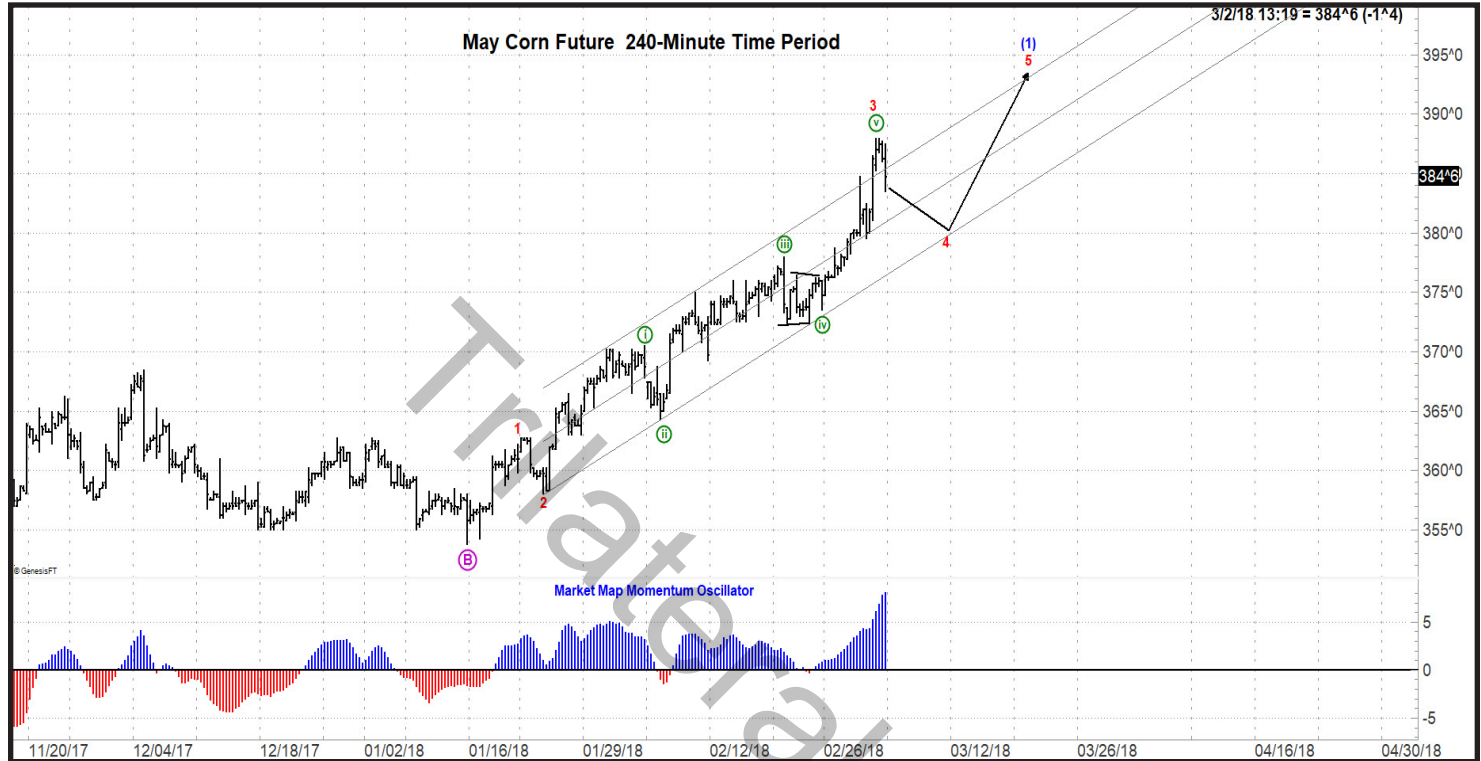
May Corn Future (Close: 3.84 3/4)

Support: 3.72 1/4, 3.69 1/4, 3.64 1/4, 3.58, 3.53 3/4.

Trend: Short-term: Up.

Resistance: 3.88, 3.95, 4.06, 4.07 3/4.

Long-term: Down.



Soft Red Winter Wheat

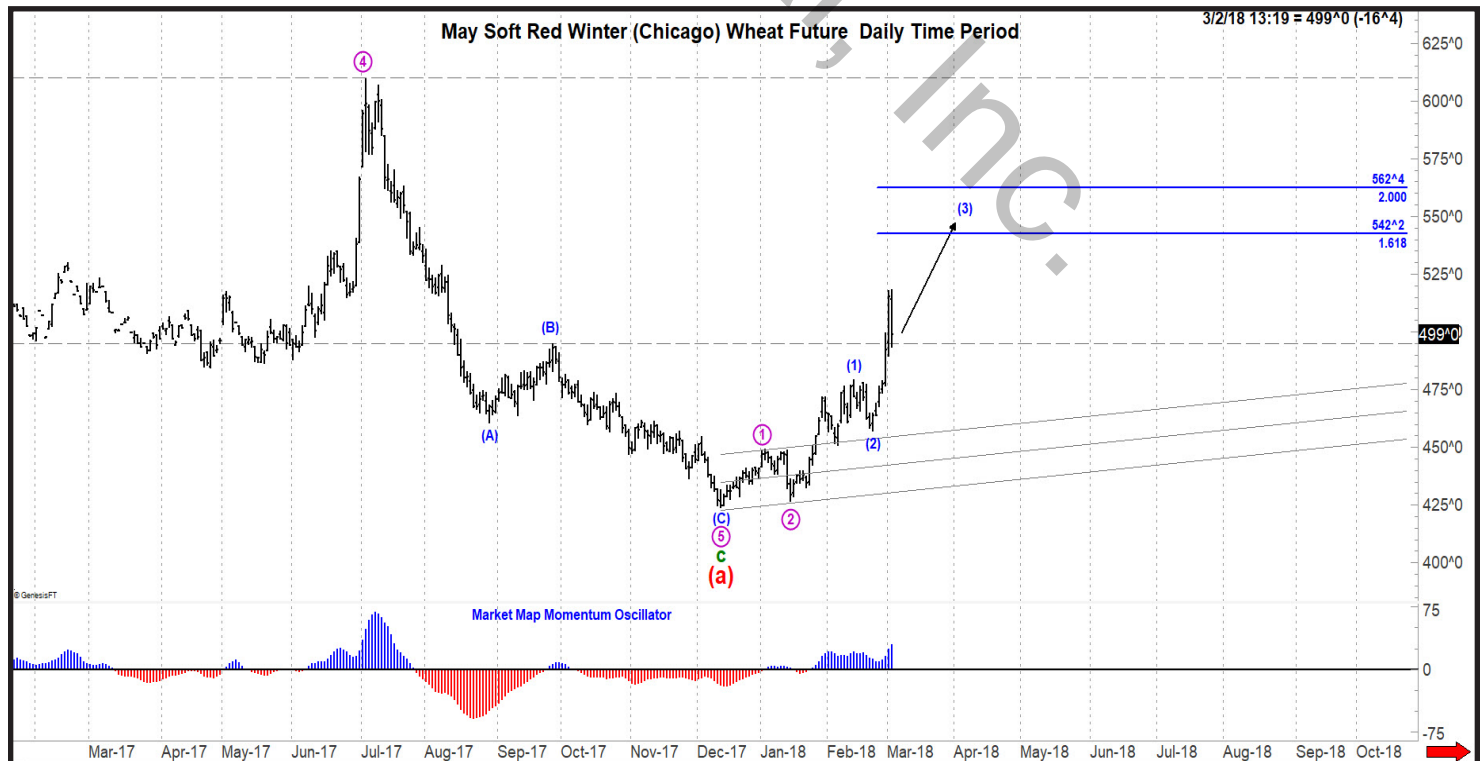
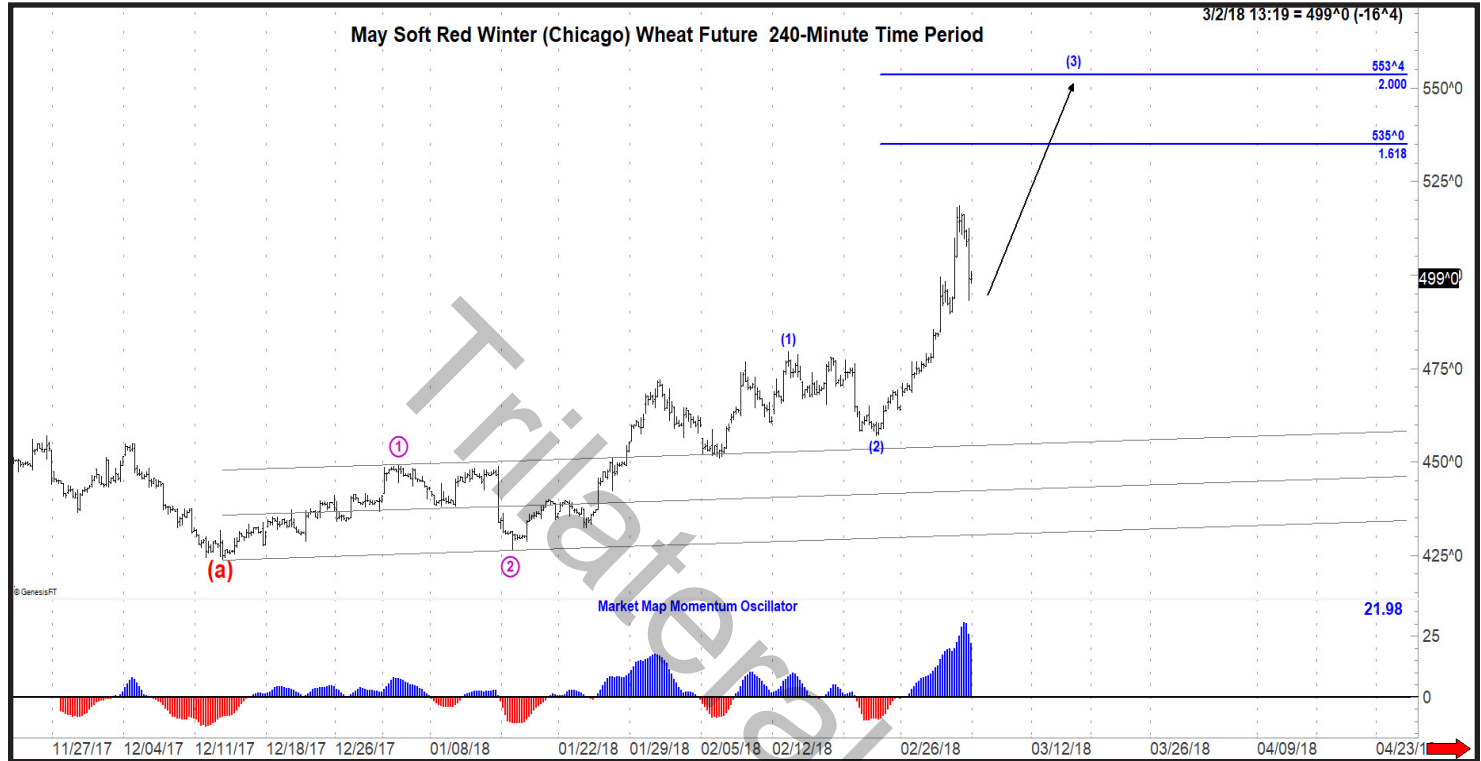
May Soft Red Winter Wheat Future (Close: 4.99)

Support: 4.89 1/2, 4.57, 4.51, 4.32 1/2, 4.26 3/4, 4.23 3/4.

Trend: Short-term: Up.

Resistance: 5.18 1/2, 5.29, 5.45 1/2.

Long-term: Flat.



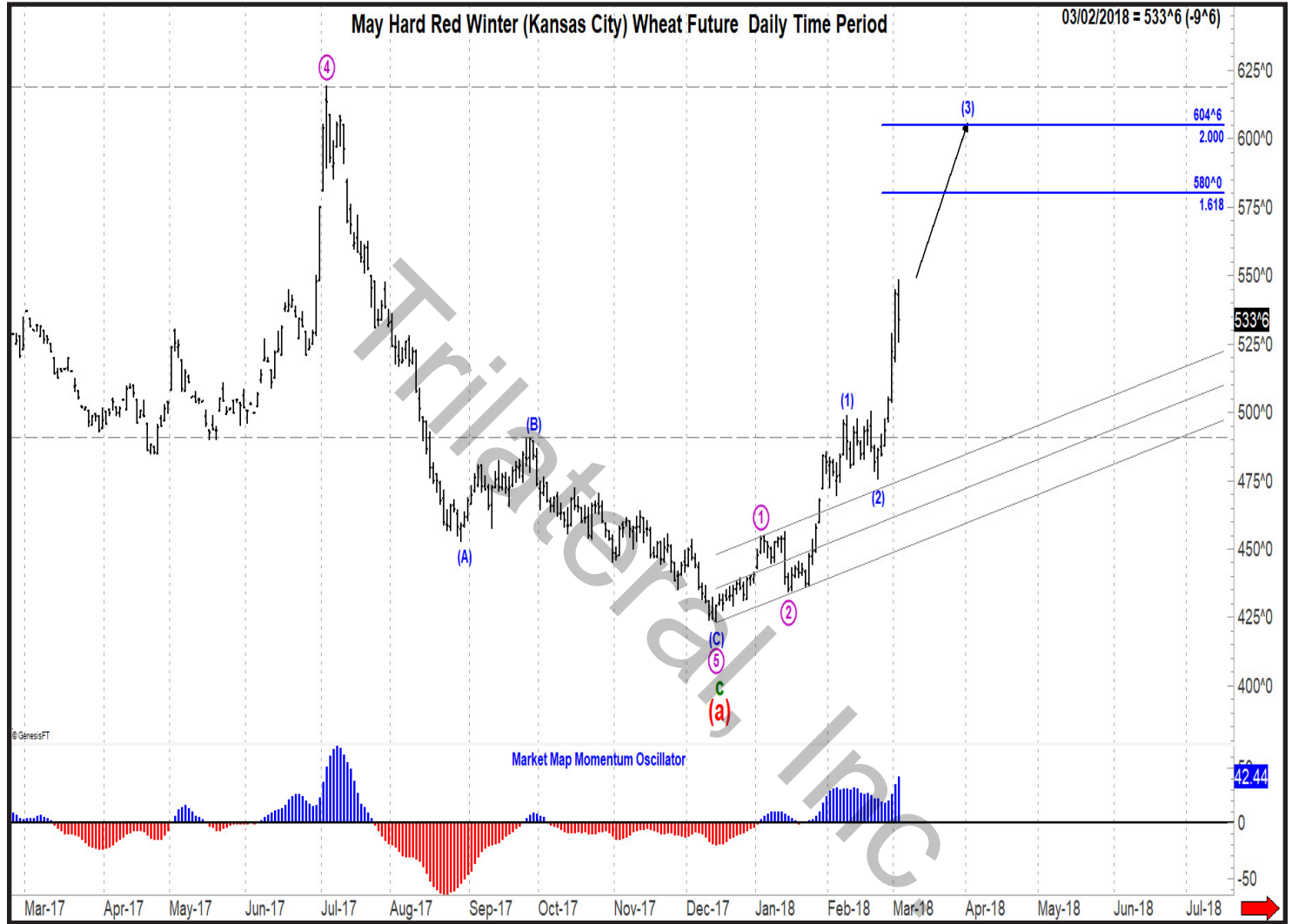
Hard Red Winter Wheat

May Hard Red Winter Wheat Future (Close: 5.32 3/4)

Support: 5.18 1/2, 4.75 3/4, 4.69 3/4, 4.36, 4.34 1/2. **Resistance:** 5.48 1/2, 5.62 1/2, 5.72, 5.85 1/2.

Trend: Short-term: Up.

Long-term: Flat.



Hard Red Spring Wheat

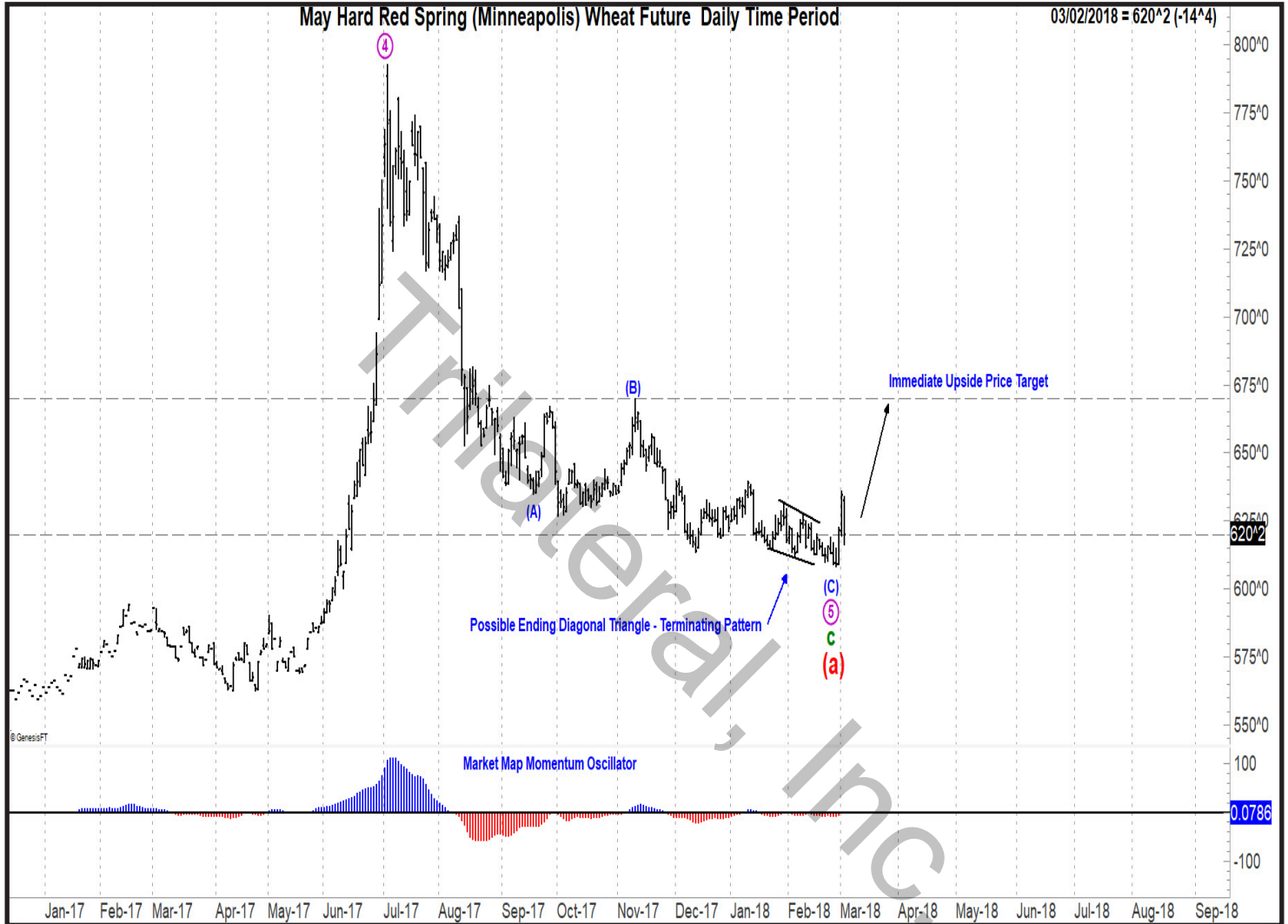
May Hard Red Spring Wheat Future (Close: 6.17 1/4)

Support: 6.08, 6.00 1/2, 5.83 3/4, 5.69, 5.62 1/2.

Resistance: 6.36, 6.39 3/4, 6.57, 6.70.

Trend: Short-term: Down.

Long-term: Up.



Oats

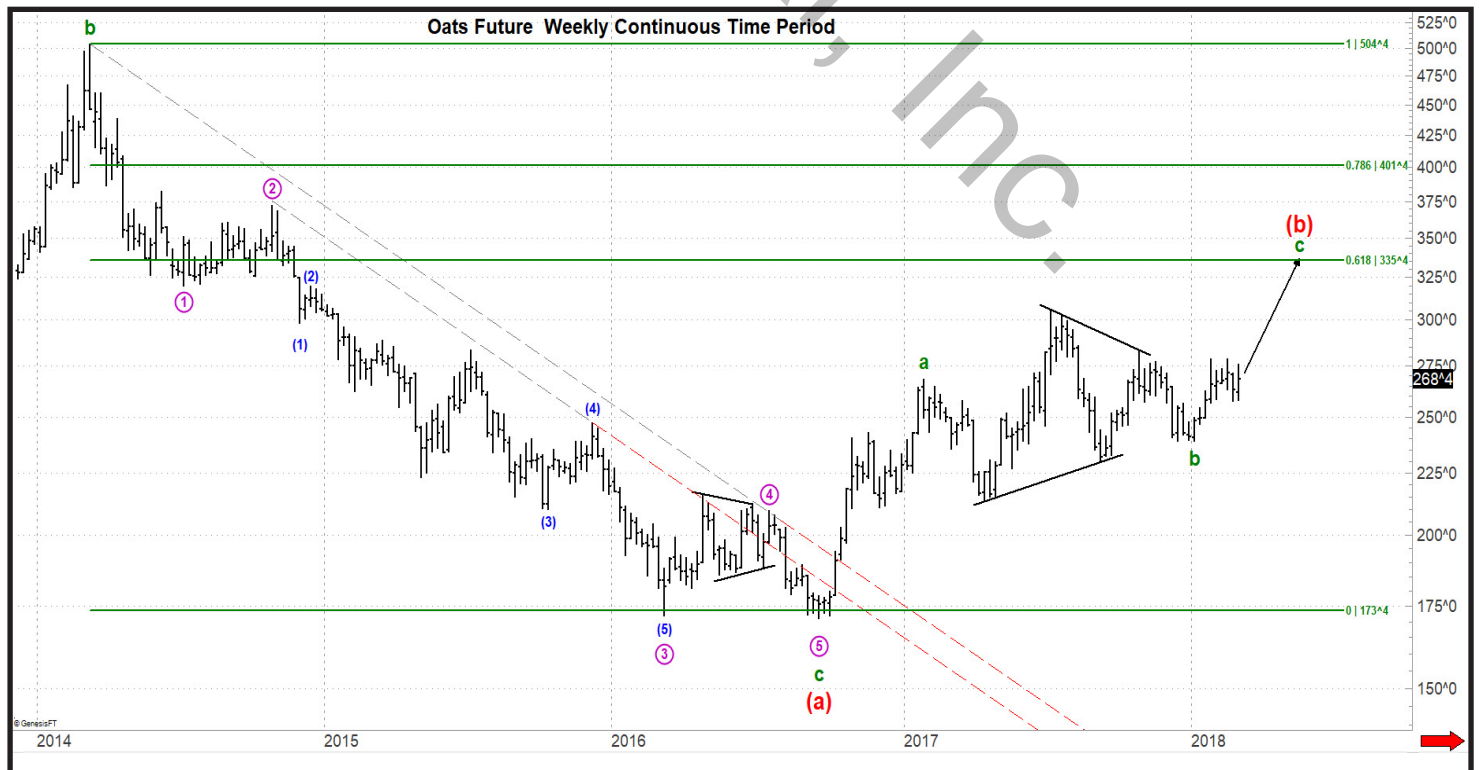
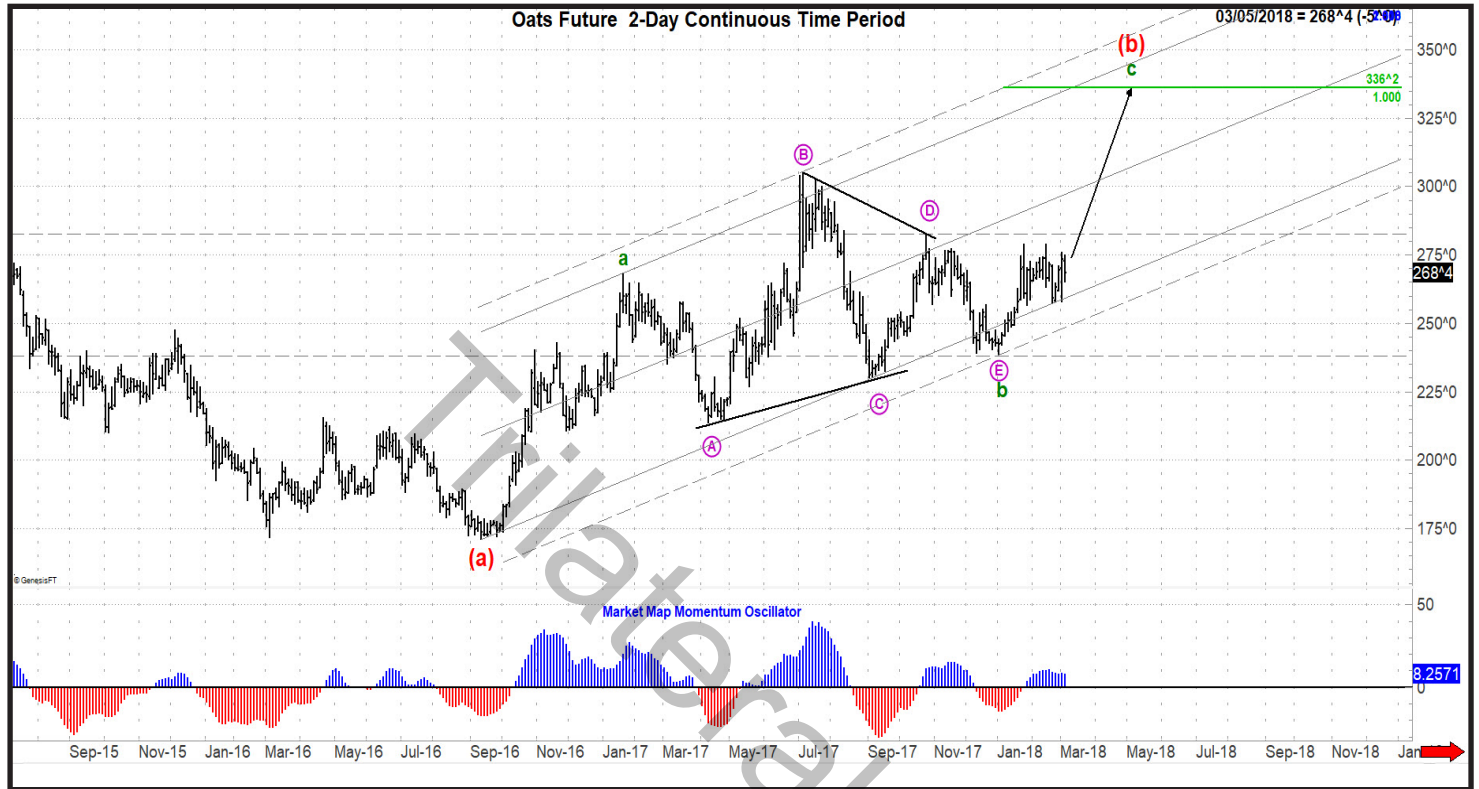
May Oats Future (Close: 2.68)

Support: 2.58, 2.57 1/4, 2.54 1/2, 2.52, 2 47 1/2, 2.45 3/4.

Trend: Short-term: Up.

Resistance: 2.76, 2.79, 2.81, 2.95.

Long-term: Up.



Rice

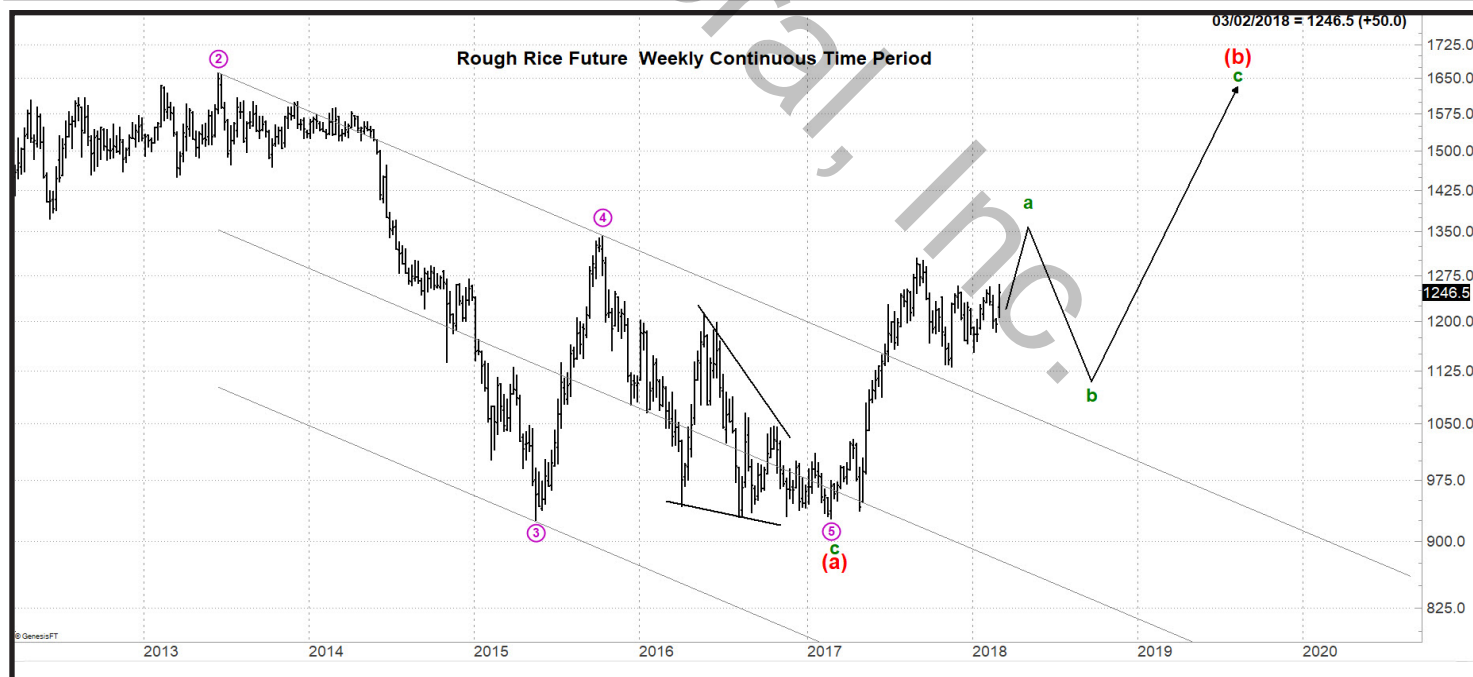
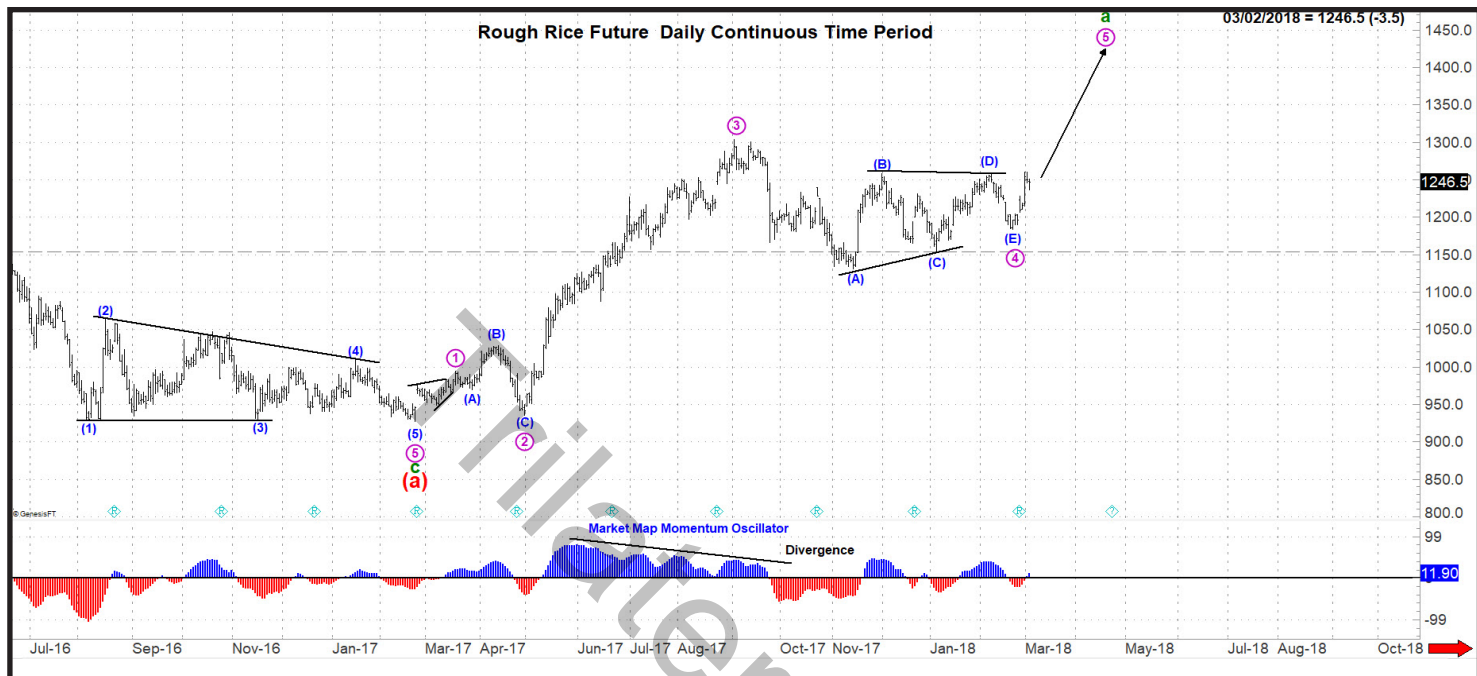
May Rice Future (Close: 12.465)

Support: 12.050, 12.050, 11.990, 11.810.

Trend: Short-term: Down.

Resistance: 12.600, 12.650, 12.825, 13.075, 13.485.

Long-term: Up.



Technical Market Perspectives is published by **Trilateral Inc.** Trilateral Inc - P.O. Box 5786, River Forest, Illinois 60305-5786. Phone: (708)-795-0482 - Email: news@trilatinc.com.

This letter is solely for informational purpose. Information coined herein is believed to be complete, accurate and expressed in good faith. It is not guaranteed. This material is not to be deemed a prospectus or solicitation for the purchase or sale of any Futures or Options contract. No specific trading recommendation will be provided. At no time may a reader be justified in inferring that any such advice is intended. Past trading results do not guarantee future profits, nor do they guarantee that losses will not occur. All trading decisions remain the responsibility of the individual making those decisions. Principals, employees and/or clients of Trilateral Inc may have positions in the investments mentioned herein, either in accord or discord with market analysis shown.